



MOVING

FORWARD



IN FAITH!

THE 3-D SCHOOL BUILDING CAMPAIGN



Moving Forward in Faith!

The 3-D School Classroom Building Fundraiser

Reaching Out for Assistance

Dynamic Dyslexia Design; The 3-D School is a non-profit, special purpose school for children with dyslexia located in Petal, Mississippi. The school was established in 2008 and successfully served 24 students in its first year. Over the past 13 years, the school has successfully served hundreds of children with dyslexia in the 3 year intervention program. Today, there are approximately 150 students enrolled in 2nd-6th grades.

Due to growing enrollment, a 5000 square ft. classroom building will be built to provide six new classrooms. The newly constructed building will be completed for the 2022-2023 school year. We are blessed to have Mike Rozier Construction Co. and Landry, Lewis, and Germany Architects managing the project.

The 3-D School is humbly requesting support through assistance with construction costs. We are reaching out to current and former parents, as well as those whose lives have been touched by dyslexia to donate to this very worthy project. Every dollar donated is appreciated.

Our fundraising goal is **\$500,000** which will cover approximately half the cost of the building. Please help us reach our goal as we continue to meet the needs of children with dyslexia in the Pine Belt Area. Thank you so much for your support of The 3-D School's mission.

Donations can be made to:

The 3-D School Building Fund

120 South George Street

Petal, MS 39465

The 3-D School is a 501c3 IRS approved charity.

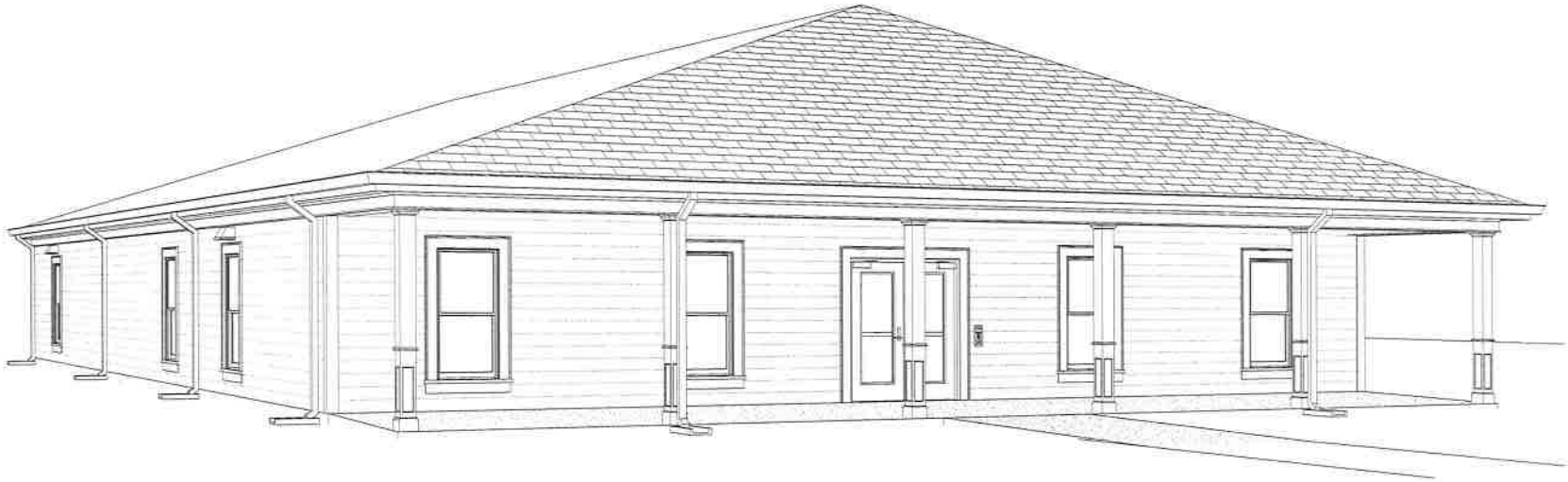
God bless,

Cena Holifield, Ph.D., CALT-QI
Executive Director and Founder
The 3-D School

The mission of the 3-D School is to identify children with the characteristics of dyslexia and provide an educational environment designed to include appropriate research based multisensory intervention, academic enrichment, and positive educational experiences that challenge students by building necessary skills for academic and personal success.

CLASSROOM BUILDING FOR THE 3D SCHOOL

PETAL, MISSISSIPPI



LANDRY
LEWIS
GERMANY
ARCHITECTS, P. A.

5211 OLD HIGHWAY 11, HATTIESBURG, MS 39402
P: 601.271.7711 WWW.LLGARCH.COM
CREATING LANDMARKS SINCE 1910

INDEX OF DRAWINGS

SHEET INDEX

AT.1	MILLWORK ELEVATIONS AND SECTIONS
GENERAL COVER	TITLE COVER SHEET
ARCHITECTURAL	
A0.1	UL RATINGS AND WALL TYPES
A1.1	FLOOR PLAN LEGENDS, SCHEDULE AND WINDOW TYPES

SHEET INDEX

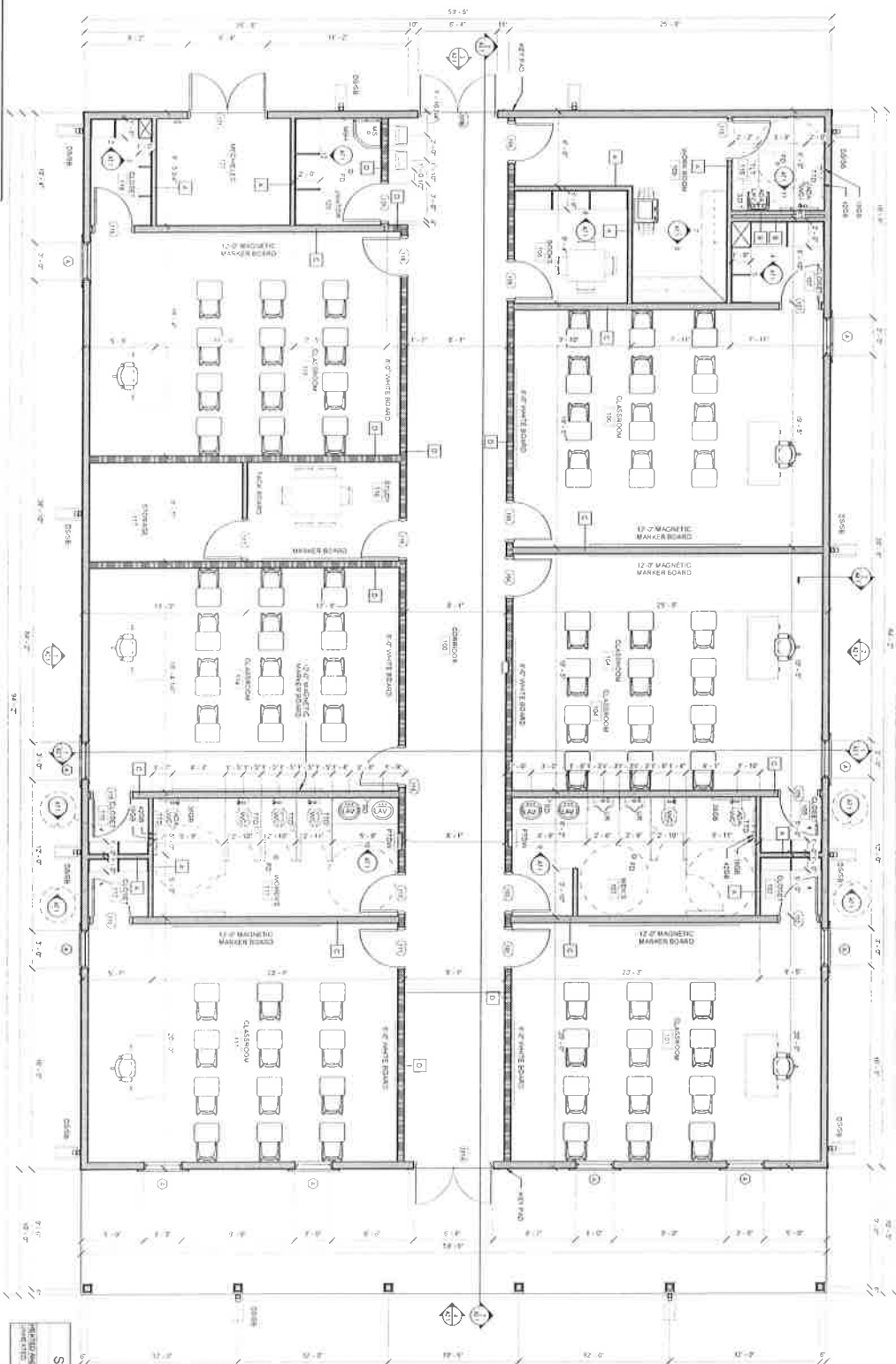
A1.2	REFLECTED CEILING PLAN, NOTES AND FINISH SCHEDULE
A1.3	ROOF PLAN AND DETAILS
A2.1	EXTERIOR ELEVATIONS AND NOTES
A3.1	BUILDING SECTIONS, OPENING SCHEDULE AND TYPES
A4.1	WALL SECTIONS
A6.1	LIFE SAFETY CODE AND LIFE SAFETY PLAN

CLASSROOM BUILDING FOR THE 3D SCHOOL

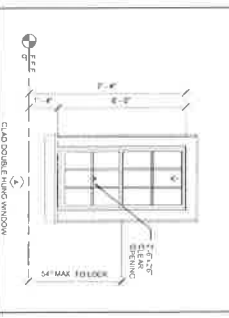


PH: M. Woodruff

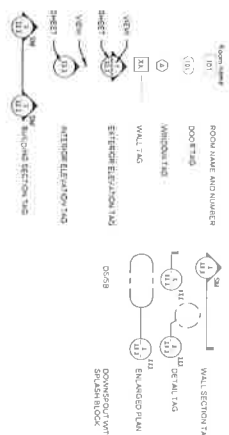
SET NO.
CN 21-3851
8-12-21



WINDOW TYPES
3/8" = 1'-0"

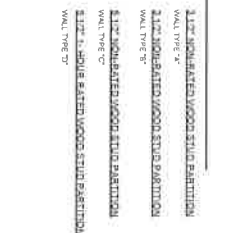


DRAWING SYMBOL LEGEND



1 | FLOOR PLAN
1/8" = 1'-0"

PARTITION LEGEND



TOILET ACCESSORY SCHEDULE

MARK	ACCESSORY	MOUNTING HEIGHT	NOTE
01	TOILET	5'-0"	
02	TOILET	5'-0"	
03	TOILET	5'-0"	
04	TOILET	5'-0"	
05	TOILET	5'-0"	
06	TOILET	5'-0"	
07	TOILET	5'-0"	
08	TOILET	5'-0"	
09	TOILET	5'-0"	
10	TOILET	5'-0"	
11	TOILET	5'-0"	
12	TOILET	5'-0"	
13	TOILET	5'-0"	
14	TOILET	5'-0"	
15	TOILET	5'-0"	
16	TOILET	5'-0"	
17	TOILET	5'-0"	
18	TOILET	5'-0"	
19	TOILET	5'-0"	
20	TOILET	5'-0"	
21	TOILET	5'-0"	
22	TOILET	5'-0"	
23	TOILET	5'-0"	
24	TOILET	5'-0"	
25	TOILET	5'-0"	
26	TOILET	5'-0"	
27	TOILET	5'-0"	
28	TOILET	5'-0"	
29	TOILET	5'-0"	
30	TOILET	5'-0"	

SQUARE FOOTAGE

MARK	NAME	AREA
01	CLASSROOM	1,200
02	CLASSROOM	1,200
03	CLASSROOM	1,200
04	CLASSROOM	1,200
05	CLASSROOM	1,200
06	CLASSROOM	1,200
07	CLASSROOM	1,200
08	CLASSROOM	1,200
09	CLASSROOM	1,200
10	CLASSROOM	1,200
11	CLASSROOM	1,200
12	CLASSROOM	1,200
13	CLASSROOM	1,200
14	CLASSROOM	1,200
15	CLASSROOM	1,200
16	CLASSROOM	1,200
17	CLASSROOM	1,200
18	CLASSROOM	1,200
19	CLASSROOM	1,200
20	CLASSROOM	1,200
21	CLASSROOM	1,200
22	CLASSROOM	1,200
23	CLASSROOM	1,200
24	CLASSROOM	1,200
25	CLASSROOM	1,200
26	CLASSROOM	1,200
27	CLASSROOM	1,200
28	CLASSROOM	1,200
29	CLASSROOM	1,200
30	CLASSROOM	1,200

GENERAL NOTES

1. CHECK ALL MOUNTING HEIGHTS WITH ARCHITECT.
2. CHECK ALL MOUNTING HEIGHTS WITH ARCHITECT.
3. CHECK ALL MOUNTING HEIGHTS WITH ARCHITECT.
4. CHECK ALL MOUNTING HEIGHTS WITH ARCHITECT.
5. CHECK ALL MOUNTING HEIGHTS WITH ARCHITECT.
6. CHECK ALL MOUNTING HEIGHTS WITH ARCHITECT.
7. CHECK ALL MOUNTING HEIGHTS WITH ARCHITECT.
8. CHECK ALL MOUNTING HEIGHTS WITH ARCHITECT.
9. CHECK ALL MOUNTING HEIGHTS WITH ARCHITECT.
10. CHECK ALL MOUNTING HEIGHTS WITH ARCHITECT.
11. CHECK ALL MOUNTING HEIGHTS WITH ARCHITECT.
12. CHECK ALL MOUNTING HEIGHTS WITH ARCHITECT.
13. CHECK ALL MOUNTING HEIGHTS WITH ARCHITECT.
14. CHECK ALL MOUNTING HEIGHTS WITH ARCHITECT.
15. CHECK ALL MOUNTING HEIGHTS WITH ARCHITECT.
16. CHECK ALL MOUNTING HEIGHTS WITH ARCHITECT.
17. CHECK ALL MOUNTING HEIGHTS WITH ARCHITECT.
18. CHECK ALL MOUNTING HEIGHTS WITH ARCHITECT.
19. CHECK ALL MOUNTING HEIGHTS WITH ARCHITECT.
20. CHECK ALL MOUNTING HEIGHTS WITH ARCHITECT.
21. CHECK ALL MOUNTING HEIGHTS WITH ARCHITECT.
22. CHECK ALL MOUNTING HEIGHTS WITH ARCHITECT.
23. CHECK ALL MOUNTING HEIGHTS WITH ARCHITECT.
24. CHECK ALL MOUNTING HEIGHTS WITH ARCHITECT.
25. CHECK ALL MOUNTING HEIGHTS WITH ARCHITECT.
26. CHECK ALL MOUNTING HEIGHTS WITH ARCHITECT.
27. CHECK ALL MOUNTING HEIGHTS WITH ARCHITECT.
28. CHECK ALL MOUNTING HEIGHTS WITH ARCHITECT.
29. CHECK ALL MOUNTING HEIGHTS WITH ARCHITECT.
30. CHECK ALL MOUNTING HEIGHTS WITH ARCHITECT.

PROJECT
CLASSROOM BUILDING FOR THE 3D SCHOOL

SHEET TITLE
FLOOR PLAN, LEGENDS, SCHEDULE AND WINDOW TYPES

CLIENT
LANDRY LEWIS GERMANY

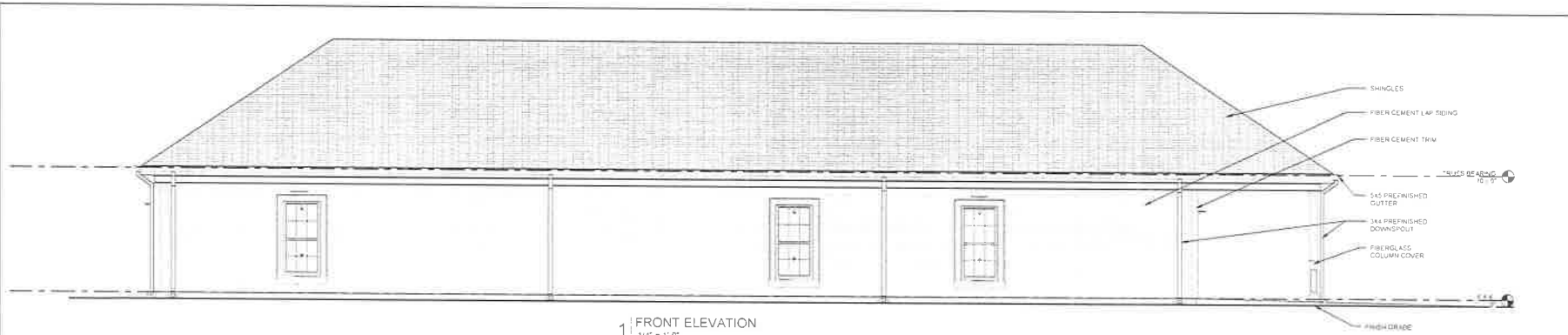
DATE
01/23/23

SCALE
AS SHOWN

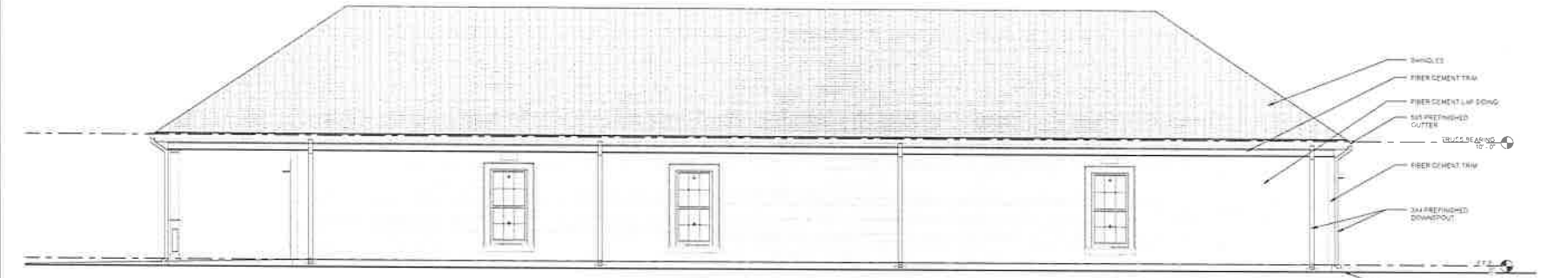
PROJECT NUMBER
CN 11-3851

SHEET NUMBER
A1.1

DESIGNER
PCL & ASSOCIATES



1 | FRONT ELEVATION
1/4" = 1'-0"



2 | BACK ELEVATION
1/4" = 1'-0"



3 | LEFT SIDE ELEVATION
1/4" = 1'-0"



4 | RIGHT SIDE ELEVATION
1/4" = 1'-0"

AIR AND WEATHER BARRIER GENERAL NOTES

- 1 ALL EXTERIOR SURFACES OF EXTERIOR SHEATHING SHALL RECEIVE A SPECIFIED AIRWEATHER BARRIER TO ACHIEVE A SEALED BUILDING ENVELOPE.
- 2 CONTRACTOR SHALL EXAMINE SUBSTRATE PRIOR TO INSTALLATION. CONTRACTORS SHALL FILL ALL VOIDS, GAPS, HOLES, ETC. AND PREP SUBSTRATE AS REQUIRED BY AIRWEATHER BARRIER MANUFACTURER.
- 3 CONTRACTOR SHALL COORDINATE AND CONFIRM WITH AIRWEATHER BARRIER MANUFACTURER EXPOSURE TIME TO UV RAYS. CONTRACTOR SHALL INSTALL OTHER SPECIFIED MATERIALS OVER AIRWEATHER BARRIER AS REQUIRED SO THAT AIRWEATHER BARRIER IS NOT COMPROMISED DUE TO EXPOSURE TO UV RAYS.
- 4 SEAL ALL PENETRATIONS OF THE AIRWEATHER BARRIER IF ANY AVOIDABLE. PENE TRATIONS OF THE AIR BARRIER BY ELECTRICAL BOXES, PLUMBING FIXTURE BOXES AND OTHER ASSEMBLIES ARE NOT AIR TIGHT. MAKE THEM AIR TIGHT BY SEALING THE ASSEMBLY AND INTERFACE BETWEEN THE ASSEMBLY AND THE AIR BARRIER BY EXTENDING THE AIR BARRIER OVER THE ASSEMBLY.
- 5 CONTRACTOR SHALL USE LIQUID FLASHING MANUFACTURED BY AIRWEATHER BARRIER MANUFACTURER SO THAT BOTH COMPONENTS MAKE A COMPLETE SYSTEM.
- 6 JOIN AND SEAL THE AIR BARRIER MATERIAL OF EACH ASSEMBLY IN A REPLEM MANNER TO THE BARRIER MATERIAL OF ADJACENT ASSEMBLIES ALLOWING FOR THE RELATIVE MOVEMENT OF THESE ASSEMBLIES AND COMPONENTS.

REVISIONS

1	1/1/1	
2	CHECKED	
3	SC1	
4	FINAL DATE	8/12/21

DESIGNED BY:
 DRAWN BY:



CLASSROOM BUILDING FOR
EXTERIOR ELEVATIONS
AND NOTES
THE 3D SCHOOL.

PROJECT LOCATION:
PICTON, MISSISSIPPI

CN 21-3851
DATE: 8/12/21

A2.1



“
“Unless someone like you
cares a whole awful lot,
Nothing is going to get
better. It's not.”
Dr. Suess

